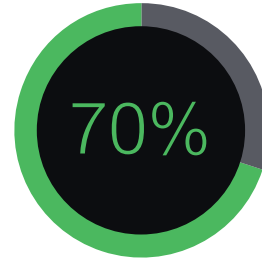


Isobar Distribution System

EcoStruxure™ Innovation At Every Level

From sensors to services, our Innovation At Every Level approach improves energy and operational efficiency by tapping the true business value of IoT advancements. We've made mobility, sensing, cloud, analytics, and cyber security technologies meaningful to customers, helping them compete in our IoT economy.



70%
of decision-makers see the business value of IoT*

*Schneider Electric IoT 2020 Business Report

Connected Products:

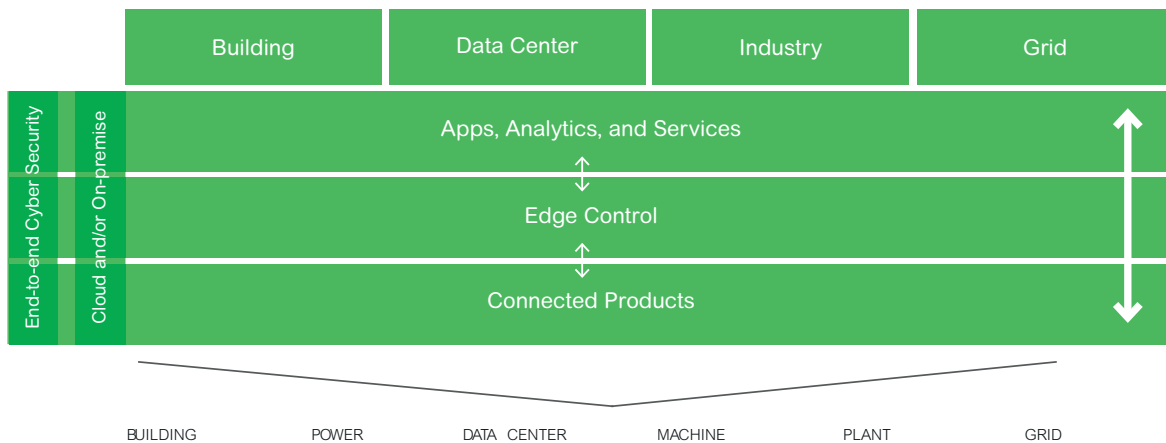
The Internet of Things starts with the best things. Our IoT-enabled best-in-class connected products include breakers, drives, UPSs, relays, sensors, and more. Devices with embedded intelligence drive better decision-making throughout operations.

Edge Control:

Mission-critical scenarios can be unpredictable, so control of devices at the edge of the IoT network is a must. This essential capability provides real-time solutions that enable local control at the edge, protecting safety and uptime.

Applications, Analytics, and Services:

Interoperability is imperative to supporting the diverse hardware and systems in building, data center, industry, and grid end markets. EcoStruxure™ enables a breadth of agnostic applications, analytics, and services for seamless enterprise integration.



Please contact Customer Care Center for Stockable and Non stockable status of references.

NORMAL STOCK ITEMS

W.E.F. January 17th, 2024

Connectivity built in

Acti9 Isobar harnesses the connectivity of the Acti9 range enabling distribution boards to become smart and connected.



1. Enable asset management on all outgoing ways with **PowerTag**




2. Smartlink SiD for wireless data concentration



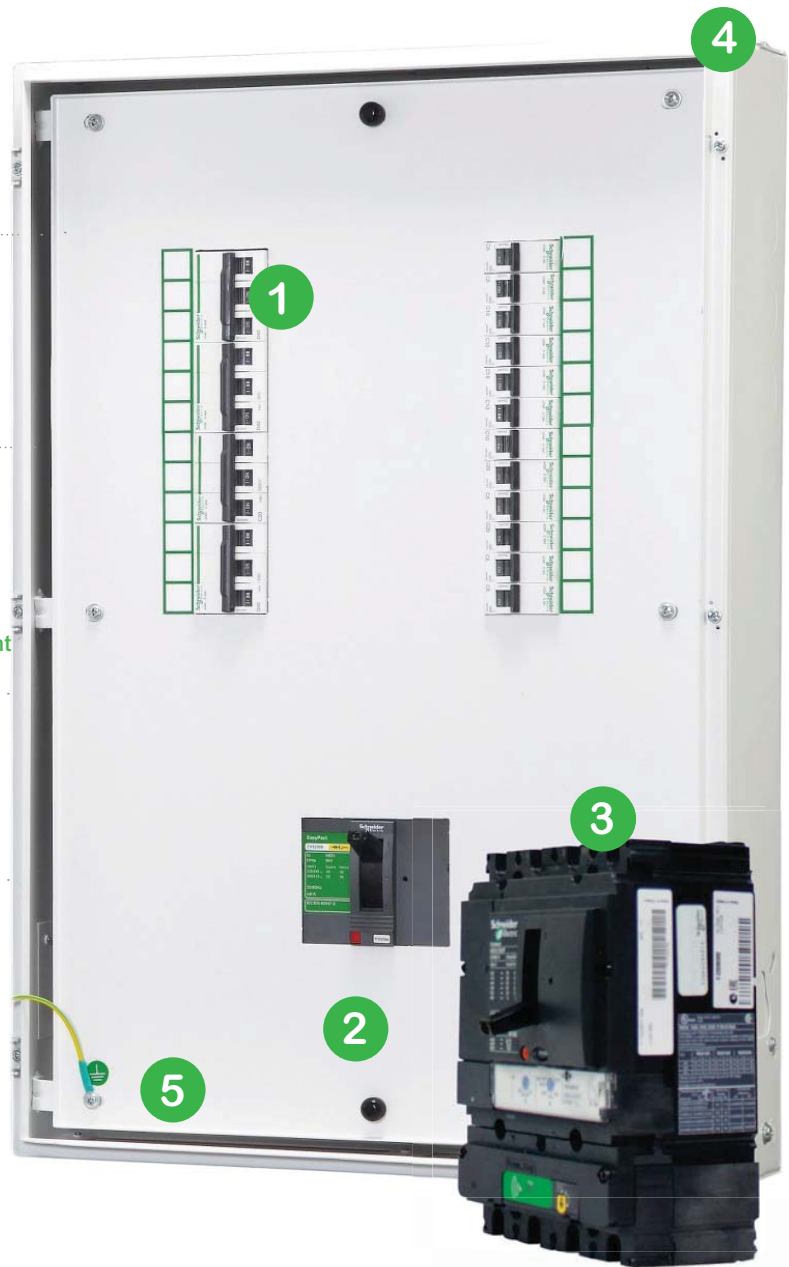
3. Enable further asset and energy management through PowerTag for Compact NSX



4. Monitor and control your assets with SiB Smartlink



5. See the power and optimise the use of your assets with Facility Expert our **simple on-line services platform**



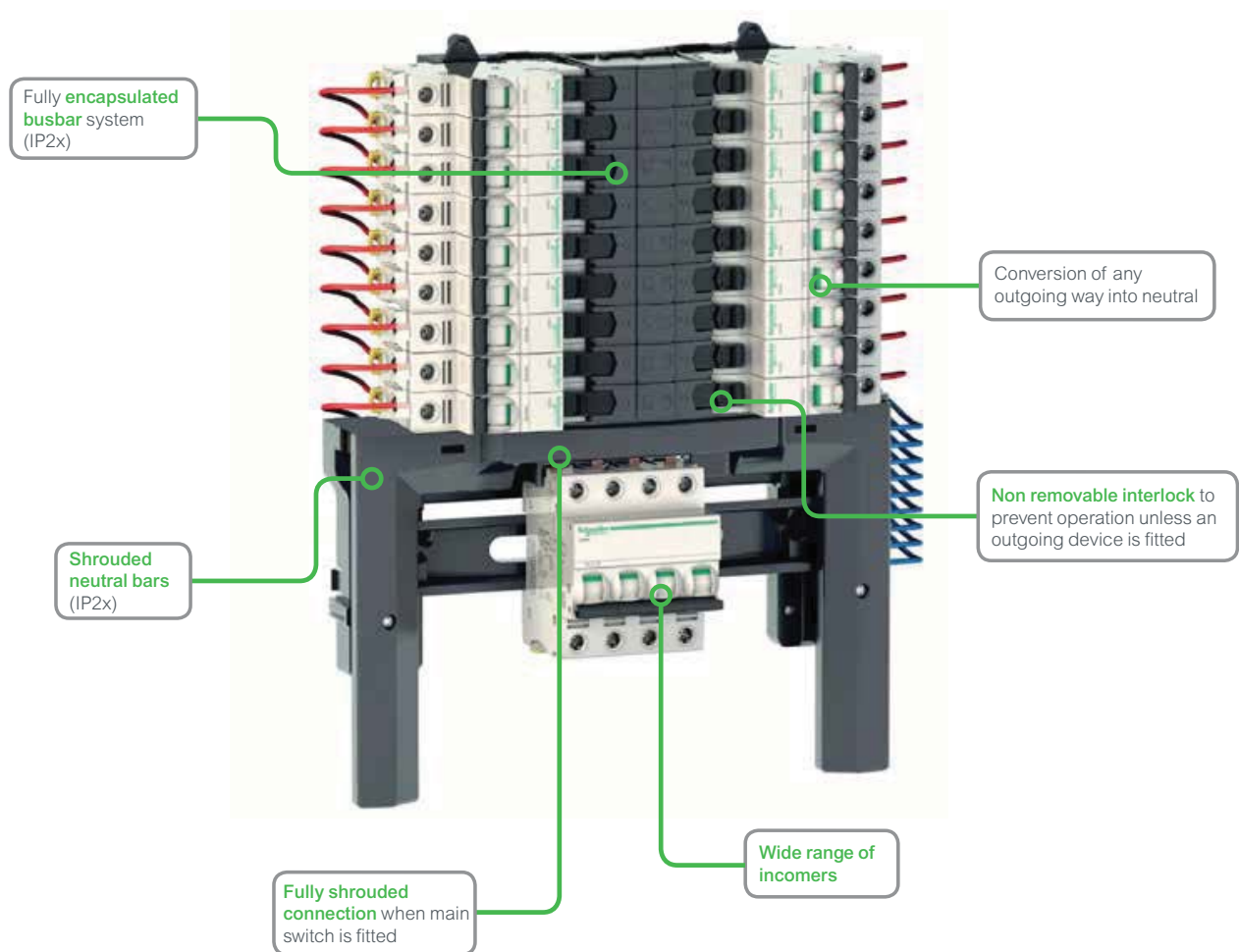
Please contact Customer Care Center for Stockable and Non stockable status of references.

NORMAL STOCK ITEMS

W.E.F. January 17th, 2024

Acti 9

Isobar Pan Assembly



- Fully type tested conditional short circuit rating of 25kA to BS EN 61439-3
- High performance MCB 10kA BS EN 60898 15kA BS EN 60947-2 in B, C or D curve 1, 2, 3, 4 pole
- 250A busbar rating
- Isobar disconnection to BS EN 60947-3 ensuring unused outgoing ways are isolated
- Option of switching outgoing neutral on all boards using distributed neutral kit
- Range of incomers: switch disconnectors, residual current devices, terminal blocks, mccb
- Single pole RCBO for new or retrofit maintaining device density
- Full range of device accessories and auxiliaries
- Shrouded Neutral
- Conversion of any outgoing way into Neutral

| Description | Double Door Metal (IP43) Reference | Unit LP [₹] |
|--|------------------------------------|-------------|
| Acti9 Isobar B - pan assembly - 16 ways TP + earth + neutral | SEA9BN16PEV | * |
| Acti9 Isobar B - pan assembly - 18 ways TP + earth + neutral | SEA9BN18PEV | * |
| Acti9 Isobar B - pan assembly - 24 ways TP + earth + neutral | SEA9BN24PEV | * |
| Acti 9 - 1P blank terminal block (no electrical connection) | SEA9BP | * |
| Isobar B - neutral bar - 1N - for distribution board - 16 ways | SEA9NB16 | * |
| Isobar B - neutral bar - 1N - for distribution board - 18 ways | SEA9NB18 | * |
| Isobar B - neutral bar - 1N - for distribution board - 24 ways | SEA9NB24 | * |
| Isobar A - neutral bar - 1N - for distribution board - 4 ways SP+N | SEA9NKIT | * |
| Acti 9 - terminal block - 250A | SEA9NPB250TB | * |
| Acti 9 Isobar B - MCCB/Interpact connection kit | SEA9BINCKIT | * |

* Price on Request

Please contact Schneider Electric Customer Care Center for Prices

NORMAL STOCK ITEMS

W.E.F. January 17th, 2024

Acti 9

Distribution Boards

Spectacular Design

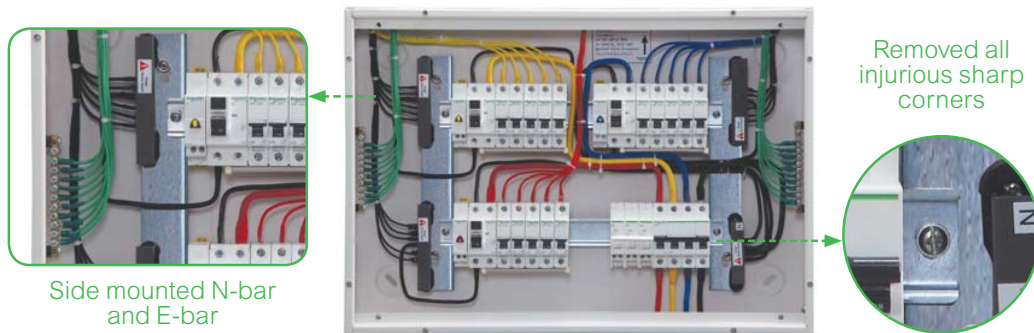
Blends seamlessly with interiors



Unique Rounded Corners | Color - RAL 9003 white | Designer Rotary Knob

Maximized Wiring Space

Convenient and Safe wiring



Side mounted N-bar and E-bar

Removed all injurious sharp corners

15% more wiring area | Reduced U-box Collar | Removable Frame, Centre plate & Gland plate

Adaptable

Total Flexibility for ease of installation and usage



Unique 5 holes mounting with positioning hole

Surface and Flush installation | Field fittable key lock provision | Reversible Door

Inspiring the **S.M.A.R.T.** choice!!!

Robust Architecture

Perfect blend of Strength & Weight

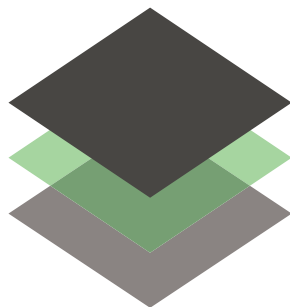


High Strength-to-Weight ratio | RoHS and REACH Compliance – ideal solution for GREEN Buildings

NEW

Base Material used - Galvanized Iron

4X Rust Resistance



1. Powder Coating
- 2. Galvanized Iron**
3. Base Iron

Galvanized Iron | Gives 4X rust resistance
No Rusting | Even if the powder coating is scratched
No Propagation Of Rust | Even If base material is chipped off
No Hassle | of repainting due to rusting

Inspiring the **S.M.A.R.T.** choice!!!

Technically Proven

Safety Guaranteed



Designed and Manufactured as per **IS 8623 - 1 & 3** | IP and IK test by ERDA & CPRI | Glow wire tested

Type Tested as per IEC 61439 - 1 & 3



IEC 61439 - 3* Fully Compliant

*Tested at **NABL** and **ASTA** accredited testing facility



Salt Spray



IP43



IK09



Reliable Door



Earthing



Temp@
Max Curr

Mechanical Tests

Electrical Tests

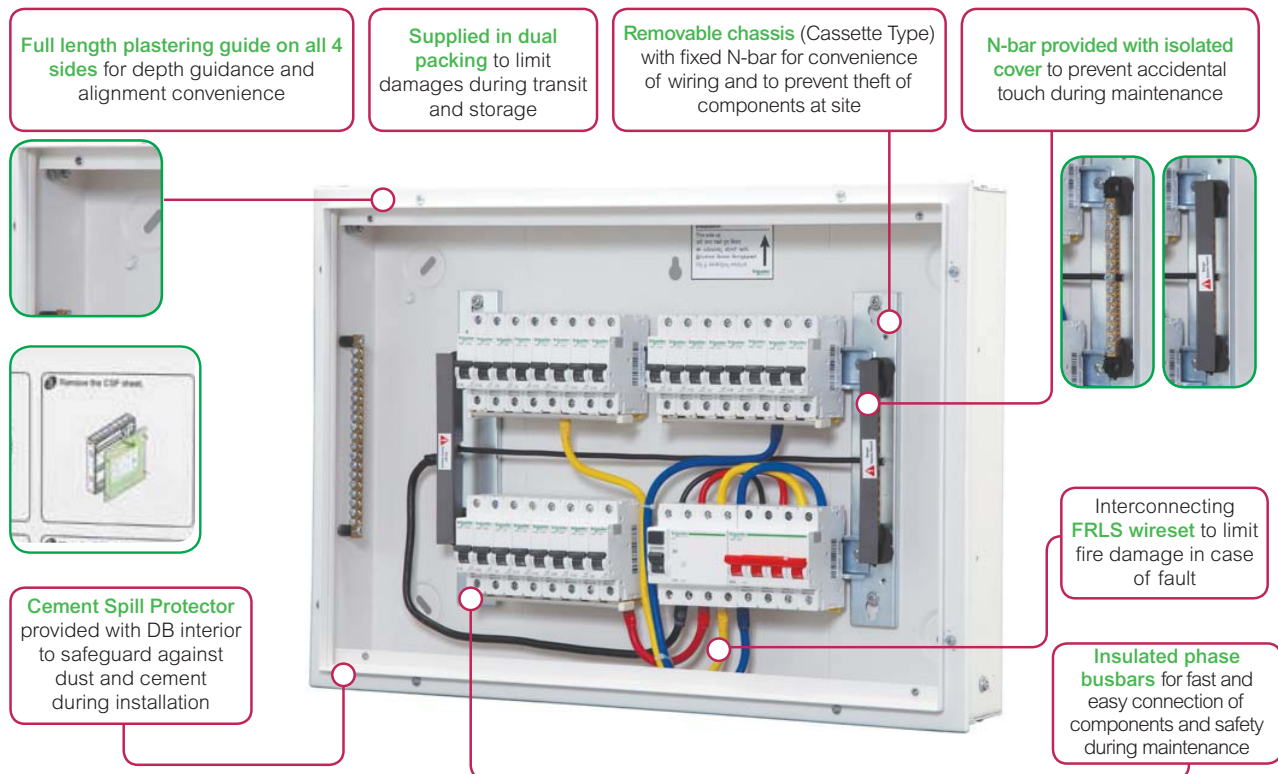
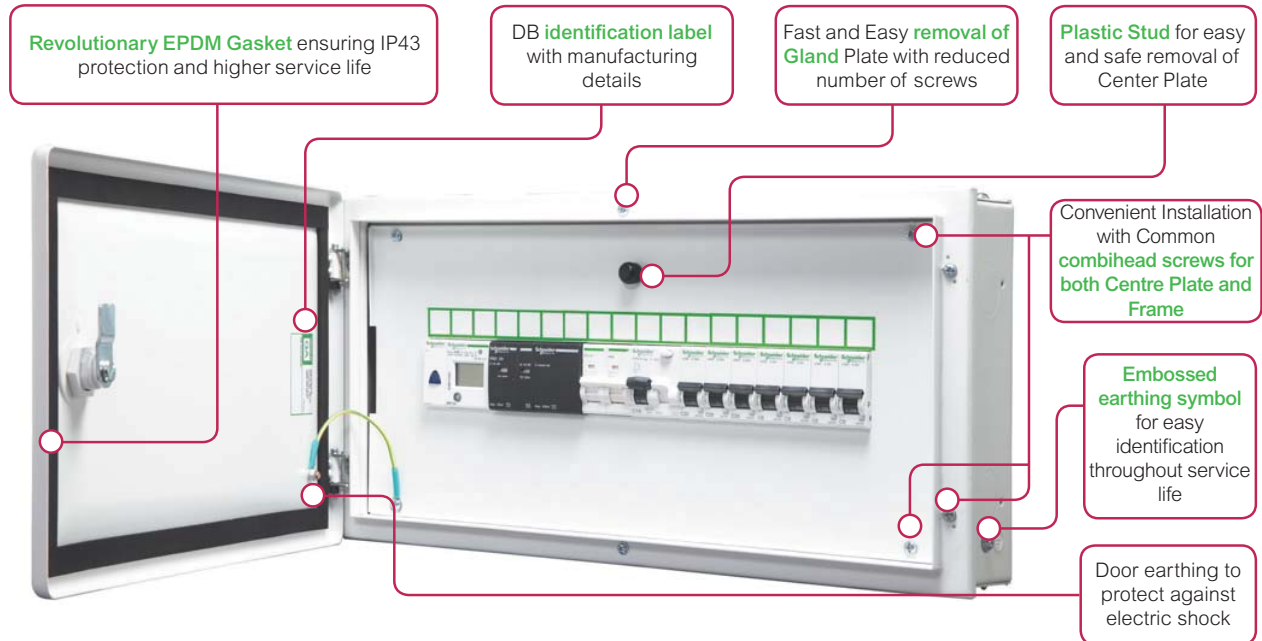
Please contact Customer Care Center for Stockable and Non stockable status of references.

NORMAL STOCK ITEMS

W.E.F. January 17th, 2024

Acti 9

Distribution Boards



Please contact Customer Care Center for Stockable and Non stockable status of references.

NORMAL STOCK ITEMS

W.E.F. January 17th, 2024

Metal Enclosures



- Metal Enclosure to mount individual Modular Device feeding directly to the load or final distribution board

| Description | Total Module Cutout | Single Door (IP30) Reference | Unit MRP [₹] |
|-------------|---------------------|--|--------------|
| 2 way | 1 / 2 | A9HMES02 <input checked="" type="checkbox"/> | 1055 |
| 4 way | 3 / 4 | A9HMES04 <input checked="" type="checkbox"/> | 1055 |

SPN DBs



- SPN DB for distribution of Single Phase Neutral supply to respective load MCBs
- Incomer - DP RCCB/RCBO/Isolator/MCB
- Outgoing - SP MCBs

| Description | Total Module Cutout (Incomer + Outgoing) | Single Door (IP30) Reference | Unit MRP [₹] | Double Door Metal (IP43) Reference | Unit MRP [₹] |
|-------------|--|--|--------------|--|--------------|
| 6 way | 6 | A9HSNS06 | 2043 | A9HSND06 <input checked="" type="checkbox"/> | 2935 |
| 8 way | 8 | A9HSNS08 <input checked="" type="checkbox"/> | 2423 | A9HSND08 <input checked="" type="checkbox"/> | 3199 |
| 12 way | 12 | A9HSNS12 | 2867 | A9HSND12 <input checked="" type="checkbox"/> | 3847 |
| 18 way | 18 | - | - | A9HSND18 <input checked="" type="checkbox"/> | 5154 |

TPN DBs



- Standard TPN DBs for distribution of Three Phase and Neutral supply
- Incomer - FP RCCB/RCBO/Isolator/MCB
- Outgoing - SP MCBs

| Description | Total Module Cutout (Incomer + Outgoing) | Single Door (IP30) Reference | Unit MRP [₹] | Double Door Metal (IP43) Reference | Unit MRP [₹] |
|-------------|--|------------------------------|--------------|---|--------------|
| 4 way eco | 4 + 12 | - | - | A9HTND04E <input checked="" type="checkbox"/> | 7657 |
| 4 way | 8 + 12 | - | - | A9HTND04 <input checked="" type="checkbox"/> | 7723 |
| 6 way | 8 + 18 | - | - | A9HTND06 <input checked="" type="checkbox"/> | 7838 |
| 8 way | 8 + 24 | - | - | A9HTND08 <input checked="" type="checkbox"/> | 9665 |
| 12 way | 8 + 36 | - | - | A9HTND12 <input checked="" type="checkbox"/> | 14756 |

Flexi Tier DBs



- Flexi DBs give total flexibility to mount any type and size of Modular devices as per load requirement
- Provided with N-Bar and E-Bar
- Flexi Tier DBs can be converted to PPI DB using 'PPI Kit' provided on next page

| Description | Total Module Cutout (Incomer + Outgoing) | Single Door (IP30) Reference | Unit MRP [₹] | Double Door Metal (IP43) Reference | Unit MRP [₹] |
|-------------------|--|------------------------------|--------------|--|--------------|
| 2 Tier 24 Modules | 2 x 12 | - | - | A9HFD224 | 8277 |
| 3 Tier 36 Modules | 3 x 12 | - | - | A9HFD336 | 9941 |
| 4 Tier 40 Modules | 4 x 10 | - | - | A9HFD440 <input checked="" type="checkbox"/> | 10501 |
| 4 Tier 56 Modules | 4 x 14 | - | - | A9HFD456 <input checked="" type="checkbox"/> | 10976 |

Note: For all above Reference MOQ = 1

Please contact Customer Care Center for Stockable and Non stockable status of references.

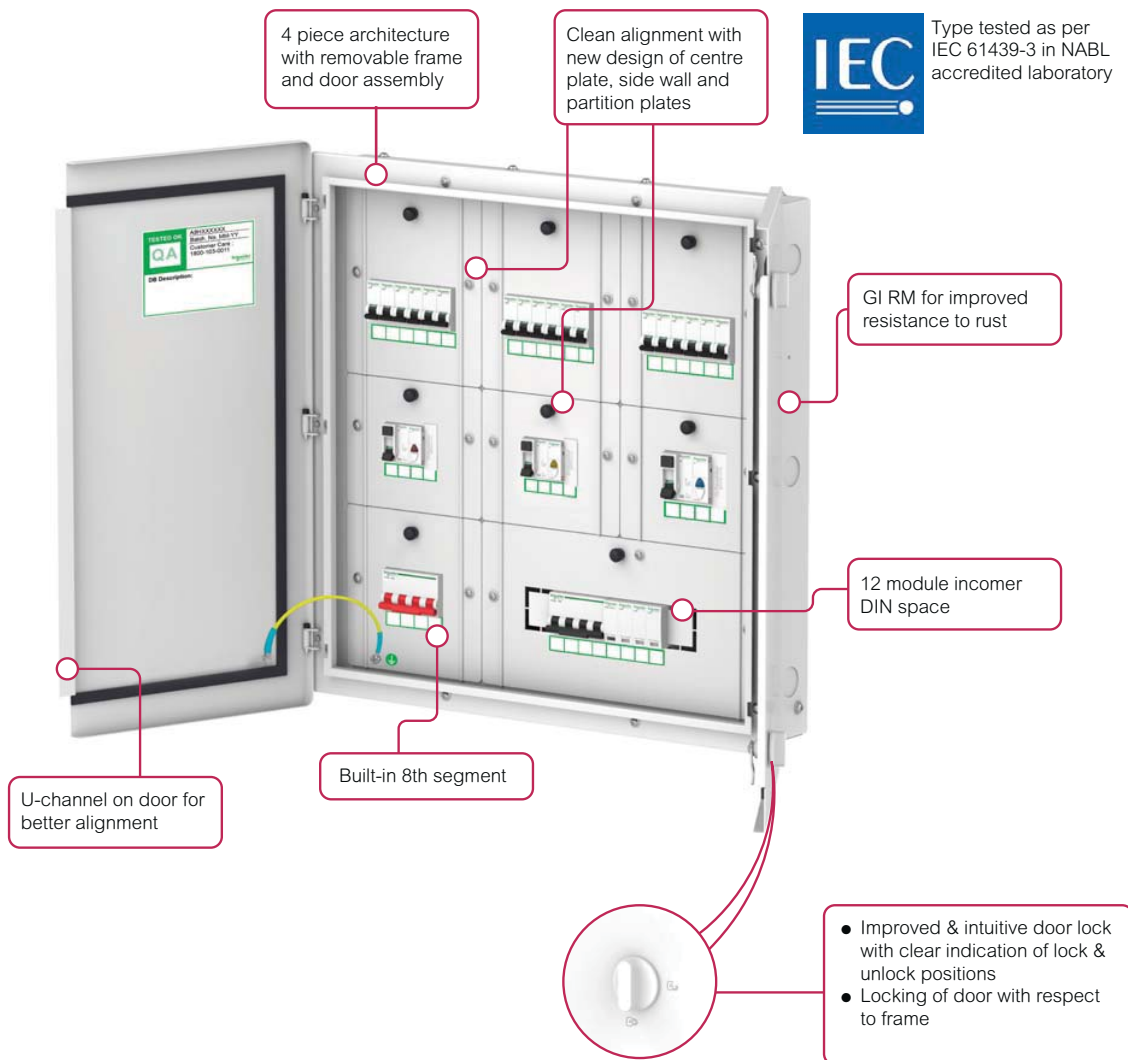
NORMAL STOCK ITEMS

W.E.F. January 17th, 2024

Acti 9

Distribution Boards

New Phase Segregated DBs



Key highlights

- 1 New compact design
- 2 Robust architecture
- 3 Type-tested system
- 4 4 piece construction
- 5 Built-in 8th segment
- 6 Split door for all variants
- 7 Clean alignment of doors, centerplates
- 8 Improved door locking
- 9 High rust resistance with GI
- 10 Increased incomer DIN space

Please Contact nearest Schneider Electric Sales Office and Customer Care Center for your reference.

Please contact Customer Care Center for Stockable and Non stockable status of references.

NORMAL STOCK ITEMS

W.E.F. January 17th, 2024

Per Phase Isolation DBs

- PPI DBs to mount DP Residual Current Device (RCD) at an individual phase level to isolate the faulty phase in case of earth leakage and ensure continuity of supply to other healthy phases
- Incomer - Modular (FP MCB/Isolator) MCCB100A (TP/FP Compact NSX or EasyPact CVS)
- Sub-Incomer - DP RCCB/RCBO
- Outgoing - SP MCBs

PPI TPN DB

| Description | Total Module Cutout (no. of rows x No. of modules per row) | Double Door Metal (IP43) | No of Ways | Unit MRP [₹] |
|-------------------|---|-----------------------------|------------|-----------------|
| 6 Way TPN PPI DB | 8 + 2 x 3 + 4 x 3 | A9HTPI06 | 6 Ways | 10194 |
| 8 Way TPN PPI DB | 8 + 2 x 3 + 6 x 3 | A9HTPI08 | 8 Ways | 11824 |
| 12 Way TPN PPI DB | 8 + 2 x 3 + 10 x 3 | A9HTPI12 | 12 Ways | 16267 |

PPI Flexi Tier DB

| Description | Total Module Cutout (no. of rows x No. of modules per row) | Double Door Metal (IP43) | No of Ways | Unit MRP [₹] |
|--------------------|---|-----------------------------|------------|-----------------|
| 4T40M Flexi PPI DB | 4 x 10 | A9HFPI10 | 10 | 15786 |
| 4T56M Flexi PPI DB | 4 x 14 | A9HFPI14 | 14 | 17773 |

Phase Segregated DBs

- Phase Segregated DBs to provide total safety for installer and maintenance personnel, by compartmentalizing each Phase and separating Incomer, Sub-Incomer and Outgoing
- Offers better continuity of supply in case of faults during maintenance at DB level.
- Incomer - Modular (FP MCB/Isolator) / MCCB 100A (TP/FP during maintenance Compact NSX or EasyPact CVS)
- Sub-Incomer - DP RCCB/RCBO
- Outgoing - SP MCBs
- GI sheet ensures improved rust resistance
- Type-tested system conforming IEC 61439-3
- Built-in 8th segment (for modular incomer only)
- Increased incomer DIN space of 12M for 6 ways to 12 ways
- Split door for all variants
- New design ensures clean alignment of doors, centerplates
- 4 piece architecture with removable frame
- Improved, intuitive door lock design with clear indication of lock and unlock positions

| Description | Total Module Cutout (Additional segment + Incomer + Sub-incomer + Outgoing) | Double Door Metal (IP43) Reference | Unit MRP [₹] |
|----------------------|---|---------------------------------------|-----------------|
| 4 way | 4 + 8 + (3*4) + (3*4) | A9HPSG04 | 15374 |
| 6 way | 4 + 12 + (3*4) + (3*6) | A9HPSG06 | 17190 |
| 8 way | 4 + 12 + (3*4) + (3*8) | A9HPSG08 | 19194 |
| 12 way | 4 + 12 + (3*4) + (3*12) | A9HPSG12 | 24095 |
| 12 way with MCCB l/c | 0 + 100A MCCB + (3*4) + (3*12) | A9HPSG12M | 32513 |

Note: For all above Reference MOQ = 1

Please contact Customer Care Center for Stockable and Non stockable status of references.

NORMAL STOCK ITEMS

W.E.F. January 17th, 2024

VTPN DBs for Modular Incomer



- Ideal solution to distribute power supply to both 3 Phase and 1 Phase loads in the same DB
- Incomer - FP RCCB / RCBO / Isolator / MCB
- Outgoing - SP MCBs / TP MCBs
- 65% more Incomer Wiring Space.
- New Compact Fishbone with better Thermal Performance
- Short Circuit Withstand – 17 kA for 250mS (100 A)/ 25 kA (250 A) for 500mS
- Secure Connections with Fixed Spreader links
- IP 2X protection at Incomer with new shrouds
- Type tested as per IEC 61439 – 3 in NABL accredited Lab
- Knockout size for Incomer increased to 50mm (to accommodate Aluminium Cable)

| Description | Total Module Cutout (Incomer + Outgoing) | Double Door Metal (IP43) Reference | No of Ways | Unit MRP [₹] |
|---------------------------------------|--|------------------------------------|------------|--------------|
| Acti9 VTPN DB 4 Ways Modular i-c 63A | 12 + 12 | A9HVM04 | 4 Ways | 14960 |
| Acti9 VTPN DB 8 Ways Modular i-c 63A | 12 + 24 | A9HVM08 | 8 Ways | 19037 |
| Acti9 VTPN DB 12 Ways Modular i-c 63A | 12 + 36 | A9HVM12 | 12 Ways | 25467 |

VTPN DBs for MCCB Incomer



- DBs for higher incoming current distribution up to 250A
- Incomer - TP/FP Compact NSX or EasyPact CVS MCCB up to 250A
- Outgoing - SP MCBs / TP MCBs
- 65% more Incomer Wiring Space.
- New Compact Fishbone with better Thermal Performance
- Short Circuit Withstand – 17 kA for 250mS (100 A)/ 25 kA (250 A) for 500mS
- Secure Connections with Fixed Spreader links
- IP 2X protection at Incomer with new shrouds
- Type tested as per IEC 61439 – 3 in NABL accredited Lab
- Knockout size for Incomer increased to 50mm (to accommodate Aluminium Cable)

| Description | Total Module Cutout (Incomer + Outgoing) | Double Door Metal (IP43) Reference | No of Ways | Unit MRP [₹] |
|-------------------------------------|--|------------------------------------|------------|--------------|
| Acti9 VTPN DB 4 Ways MCCB i-c 100A | 100 A MCCB + 12 | A9HVN04L | 4 Ways | 16382 |
| Acti9 VTPN DB 4 Ways MCCB i-c 160A | 160 A MCCB + 12 | A9HVN04M | 4 Ways | 18035 |
| Acti9 VTPN DB 8 Ways MCCB i-c 100A | 100 A MCCB + 24 | A9HVN08L | 8 Ways | 20763 |
| Acti9 VTPN DB 8 Ways MCCB i-c 160A | 160 A MCCB + 24 | A9HVN08M | 8 Ways | 22467 |
| Acti9 VTPN DB 8 Ways MCCB i-c 250A | 250 A MCCB + 24 | A9HVN08H | 8 Ways | 28803 |
| Acti9 VTPN DB 12 Ways MCCB i-c 100A | 100 A MCCB + 36 | A9HVN12L | 12 Ways | 27600 |
| Acti9 VTPN DB 12 Ways MCCB i-c 160A | 160 A MCCB + 36 | A9HVN12M | 12 Ways | 29983 |
| Acti9 VTPN DB 12 Ways MCCB i-c 250A | 250 A MCCB + 36 | A9HVN12H | 12 Ways | 34072 |

Mivan Compatible DB

SPN DBs

| Description | Total Module Cutout (Incomer + Outgoing) | Double Door Metal (IP43) Reference | No of Ways | Unit MRP [₹] |
|------------------------------|--|------------------------------------|------------|--------------|
| Acti9 DB 6 way SPN DD 1.6mm | 2 + 4 | A9HSND06Z | 6 Ways | On Request |
| Acti9 DB 8 way SPN DD 1.6mm | 2 + 6 | A9HSND08Z | 8 Ways | On Request |
| Acti9 DB 12 way SPN DD 1.6mm | 2 + 10 | A9HSND12Z | 12 Ways | On Request |
| Acti9 DB 18 way SPN DD 1.6mm | 2 + 16 | A9HSND18Z | 18 Ways | On Request |

TPN DBs

| Description | Total Module Cutout (Incomer + Outgoing) | Double Door Metal (IP43) Reference | No of Ways | Unit MRP [₹] |
|------------------------------|--|------------------------------------|------------|--------------|
| Acti9 DB 4 way TPN DD 1.6mm | 8 + 4 x 3 | A9HTND04Z | 4 Ways | On Request |
| Acti9 DB 6 way TPN DD 1.6mm | 8 + 6 x 3 | A9HTND06Z | 6 Ways | On Request |
| Acti9 DB 8 way TPN DD 1.6mm | 8 + 8 x 3 | A9HTND08Z | 8 Ways | On Request |
| Acti9 DB 12 way TPN DD 1.6mm | 8 + 12 x 3 | A9HTND12Z | 12 Ways | On Request |

Please contact Customer Care Center for Stockable and Non stockable status of references.

NORMAL STOCK ITEMS

W.E.F January 17th, 2024

Phase Segregated DBs (Mivan Compatible)

| Description | Total Module Cutout (Additional segment + Incomer + Sub-incomer + Outgoing) | Double Door Metal (IP43) Reference | No of Ways | Unit MRP [₹] |
|------------------------------|--|--|------------|--------------|
| Acti9 DB 4 way PSG DD 1.6mm | 4 + 8 + (3*4) + (3*4) | A9HPSG04Z | 4 ways | On Request |
| Acti9 DB 6 way PSG DD 1.6mm | 4 + 12 + (3*4) + (3*6) | A9HPSG06Z | 6 ways | On Request |
| Acti9 DB 8 way PSG DD 1.6mm | 4 + 12 + (3*4) + (3*8) | A9HPSG08Z | 8 ways | On Request |
| Acti9 DB 12 way PSG DD 1.6mm | 4 + 12 + (3*4) + (3*12) | A9HPSG12Z | 12 ways | On Request |

Flexi Tier DBs (Mivan Compatible)

| Description | Total Module Cutout (no. of rows x No. of modules per row) | Double Door Metal (IP43) Reference | No of Modules Per Row | Unit MRP [₹] |
|-------------------|--|--|-----------------------|--------------|
| 4 Tier 40 Modules | 4 x 10 | A9HFD440Z | 10 | On Request |
| 4 Tier 56 Modules | 4 x 14 | A9HFD456Z | 14 | On Request |

TV TEL DB

| Description | Double Door Metal (IP30) Reference | Unit MRP [₹] |
|-------------------------------------|---------------------------------------|--------------|
| Acti9 DB TVTEL BOX 1mm IP30 | A9HTVTEL | On Request |
| Acti9 DB TVTEL & ONT BOX 1.2MM IP30 | A9HOTVTEL | On Request |

Note: For all above Reference MOQ = 1

Metal Clad P&S Units



- Plug & Socket Unit with Electra Plug & Socket and provision to mount modular protection devices to feed the end load directly

| Description | Total Module Cutout | Single Door (IP30) Reference | Unit MRP [₹] |
|----------------|---------------------|------------------------------|--------------|
| 10A 1P+N+E P&S | 2 | A9HMS210 | 2685 |
| 20A 1P+N+E P&S | 2 | A9HMS220 | 2873 |
| 30A 3P+E P&S | 3 | A9HMS330 | 6289 |

Please contact Customer Care Center for Stockable and Non stockable status of references.

NORMAL STOCK ITEMS

W.E.F. January 17th, 2024

Industrial P&S Units (provision to mount PratiKa Sockets)



- Plug & Socket Unit with provision to mount PratiKa straight / angled* socket and modular protection devices to feed the end load directly

| Description | Total Module Cutout | Single Door (IP30) Reference | Unit MRP [₹] |
|---------------|---------------------|------------------------------|--------------|
| 16A 3P PK P&S | 2 | A9HKS316 | 2482 |
| 32A 3P PK P&S | 2 | A9HKS332 | 4100 |
| 32A 5P PK P&S | 4 | A9HKS532 | 4856 |
| 63A 5P PK P&S | 4 | A9HKS563 | 9806 |

Locks for Acti 9 DBs

Key Lock*



Lock & Unlock symbol on door for easy & intuitive operation

| Description | Reference | Unit MRP [₹] |
|-------------------|-----------|--------------|
| New Rotary Lock** | A9HRL901 | 795 |

Note: **Use New Rotary lock reference A9HRL901 for:
Acti9 DBs manufactured September 2020 onwards
Acti9 DBs with lock & unlock symbol on door.

Accessories for Distribution Boards

Wire Way Box for Double Door IP43 DBs

| Description | Reference | Unit MRP [₹] |
|---|--------------|--------------|
| Wire way box for A9HSND06 AC 848 | A9HSND06WB | 1967 |
| Wire way box for A9HSND08 AC 848 | A9HSND08WB | 2377 |
| Wire way box for A9HSND12 AC 848 | A9HSND12WB | 2650 |
| Wire way box for A9HSND18 AC 848 | A9HSND18WB | 3785 |
| Wire way BOX FOR A9HTND04E - PM 163 | A9HTND04EWB | 2731 |
| Wire way box for A9HTND04 AC 849 | A9HTND04WB | 3020 |
| Wire way box for A9HTND06 AC 849 | A9HTND06WB | 3203 |
| Wire way box for A9HTND08 AC 849 | A9HTND08WB | 3785 |
| Wire way box for A9HTND12 AC 849 | A9HTND12WB | 4421 |
| Wire way BOX FOR A9HFD224 AC 850 | A9HFD224WB | 2816 |
| Wire way BOX FOR A9HFD336 AC 850 | A9HFD336WB | 2788 |
| Wire way BOX FOR A9HFD440 AC 850 | A9HFD440WB | 2695 |
| Wire way BOX FOR A9HFD456 AC 850 | A9HFD456WB | 3020 |
| WWB Acti9 PSG DB 8 Seg 4 Ways MCB i/c | A9HPSG04WWB | 3896 |
| WWB Acti9 PSG DB 8 Seg 6 Ways MCB i/c | A9HPSG06WWB | 4559 |
| WWB Acti9 PSG DB 8 Seg 8 Ways MCB i/c | A9HPSG08WWB | 5100 |
| WWB Acti9 PSG DB 8 Seg 12 Ways MCB i/c | A9HPSG12WWB | 6610 |
| WWB Acti9 PSG DB 7 Seg 12 Ways MCCB i/c | A9HPSG12MWWB | 7060 |
| WWB for Std VTPN DB MCB i/c AC034 | A9HVMXXWB | 2866 |
| WWB for Std VTPN DB MCCB i/c AC035 | A9HVNXWB | 3050 |

Modular Distribution Boards - Metallic

| Description | Reference | Unit MRP [₹] |
|---------------------------|-----------|--------------|
| Busbars | | |
| Fork Busbar 1P 12MOD. 63A | R9XFH112 | 1075 |
| Fork Busbar 1P 57MOD. 63A | R9XFH157 | 2393 |
| Fork Busbar 2P 12MOD. 63A | R9XFH212 | 1239 |
| Fork Busbar 2P 57MOD. 63A | R9XFH257 | 4590 |
| Fork Busbar 3P 12MOD. 63A | R9XFH312 | 2797 |
| Fork Busbar 3P 57MOD. 63A | R9XFH357 | 10012 |
| Fork Busbar 4P 12MOD. 63A | R9XFH412 | 2580 |
| Fork Busbar 4P 57MOD. 63A | R9XFH457 | 10775 |
| Busbar Accessories | | |
| Set of 10 End Caps 1P | R9XE110 | * |
| Set of 10 End Caps 2P | R9XE210 | * |
| Set of 10 End Caps 3P | R9XE310 | 1131 |
| Set of 10 End Caps 4P | R9XE410 | * |
| Set of 20 Tooth Caps | R9XT20 | 1359 |
| Blanking Plate | 13229B | 56 |

Note: Blanking Plate MOQ = 10, All other MOQ = 1

Customized Distribution Boards to Suit Your Need - Available on Request*

- TV/Telephone DBs
- Pre-Wired DBs
- 8 Segment DBs
- Acrylic Door DBs
- IP54 DBs
- DBs with Phase Indication Lamps

*upto 32A socket only

Note: For all above Reference MOQ = 1

Note: * Please contact nearest Schneider Electric Sales Office or Customer Care Center for coordination chart

Please contact Customer Care Center for Stockable and Non stockable status of references.

NORMAL STOCK ITEMS

W.E.F. January 17th, 2024